

7^e Conférence africaine sur la population

Dividende démographique en Afrique : perspectives, opportunités et défis

Johannesburg, 30 novembre - 4 décembre 2015

Un demi-siècle de géographie de la fécondité et de la nuptialité en Tunisie : divergences ou convergences ?^(*)

Zahia Ouadah-Bedidi^{1,2} Jacques Vallin¹ Ibtihel Bouchoucha³

1 URMIS, Université Paris Diderot

2 Institut national d'études démographiques

3 Université de Montréal

^(*) « Ce travail a été réalisé dans le cadre du laboratoire d'excellence iPOPS porté par heSam Université, portant la référence ANR-10-LABX-0089. Ce travail a bénéficié d'une aide de l'Etat gérée par l'Agence Nationale de la recherche au titre du projet Investissements d'Avenir Paris Nouveaux Mondes portant la référence n° ANR-11-IDEX-0006-02. »

7^e African Population Conference

Demographic Dividend in Africa: Prospects, Opportunities and Challenges

Johannesburg, November 30 - december 4, 2015

Half a century of fertility and nuptiality geographies in Tunisie: divergence or convergence? (*)

Zahia Ouadah-Bedidi^{1,2} Jacques Vallin¹ Ibtihel Bouchoucha³

1 URMIS, University Paris Diderot

2 French Institute for Demographic Studies (INED)

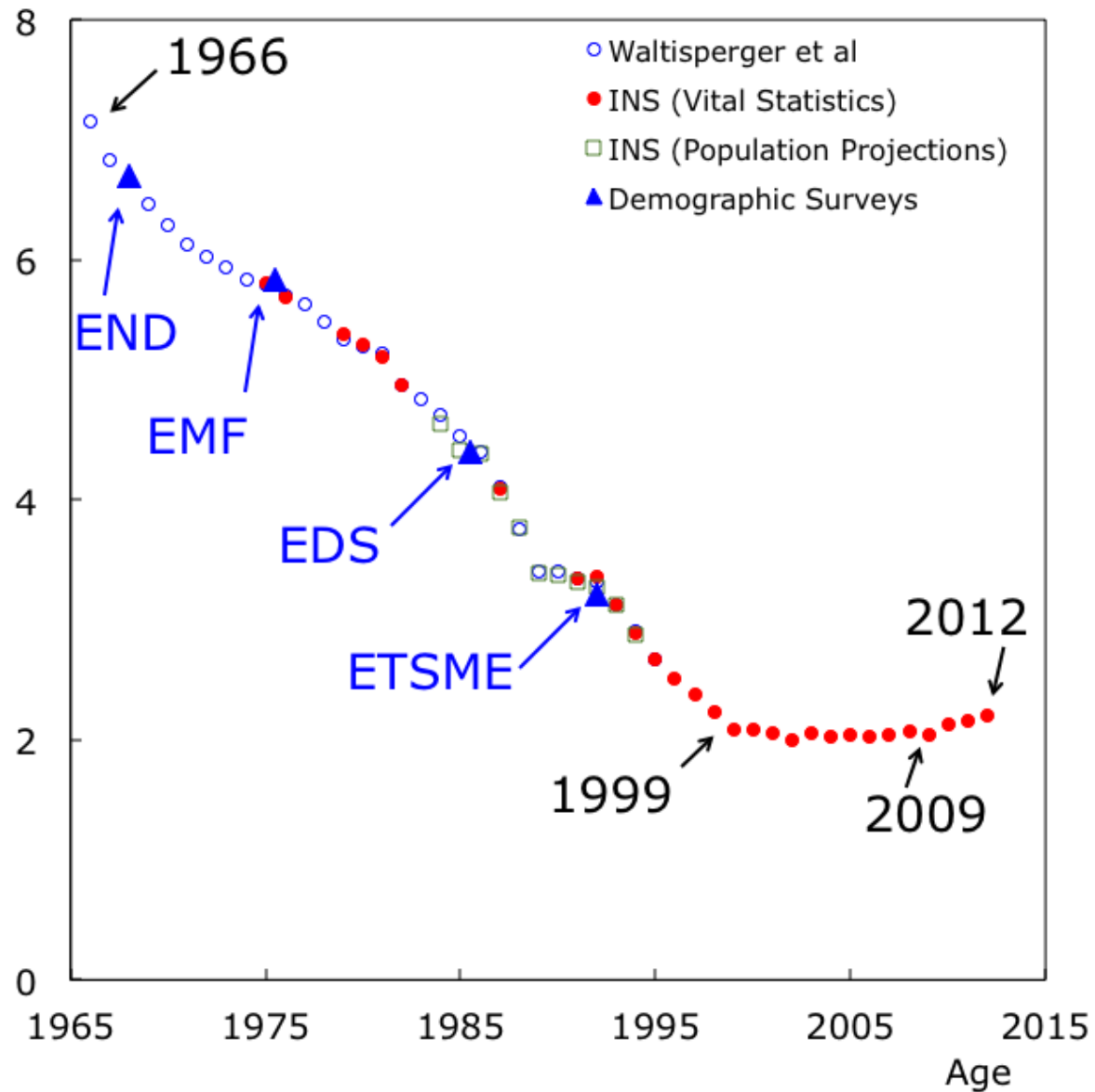
3 University of Montreal

(*) « Ce travail a été réalisé dans le cadre du laboratoire d'excellence iPOPS porté par heSam Université, portant la référence ANR-10-LABX-0089. Ce travail a bénéficié d'une aide de l'Etat gérée par l'Agence Nationale de la recherche au titre du projet Investissements d'Avenir Paris Nouveaux Mondes portant la référence n° ANR-11-IDEX-0006-02. »

Introduction

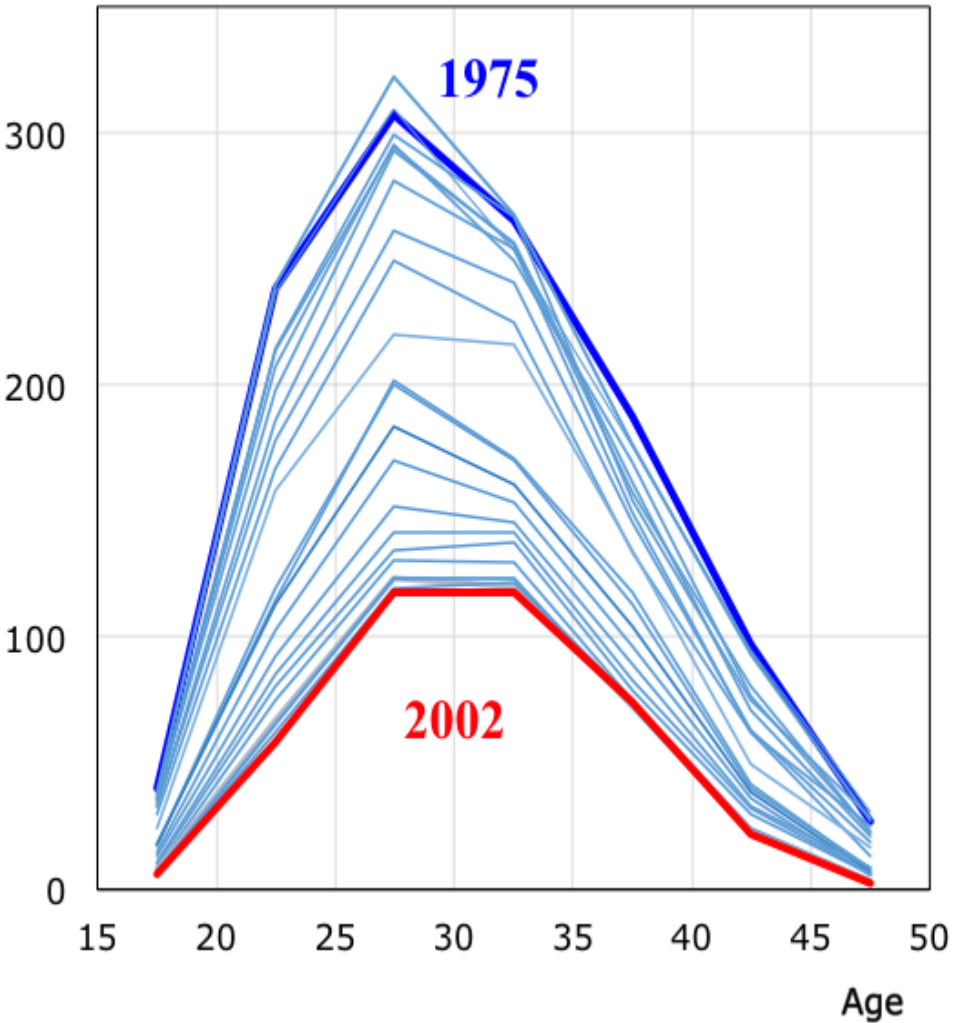
Total Fertility Rate at the National level

TFR (children per woman)

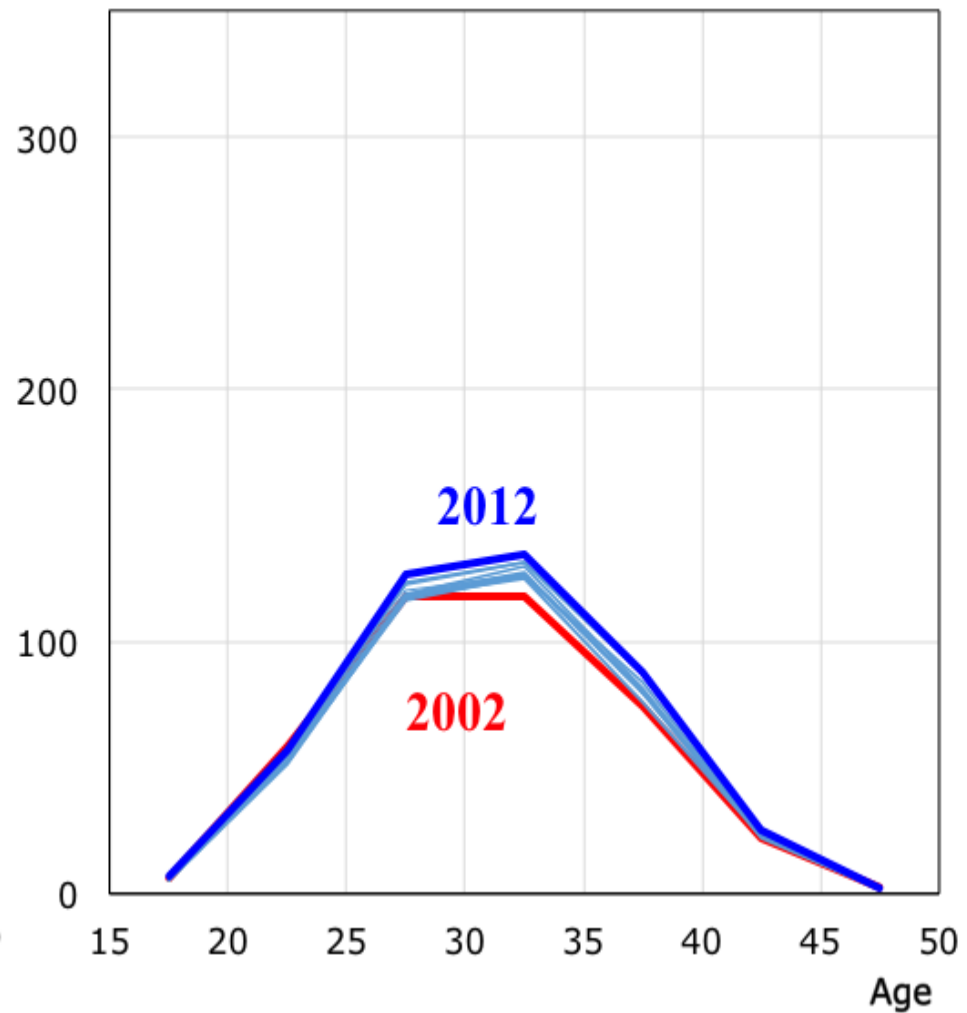


Age specific fertility rates

Fertility rate (per 1000)

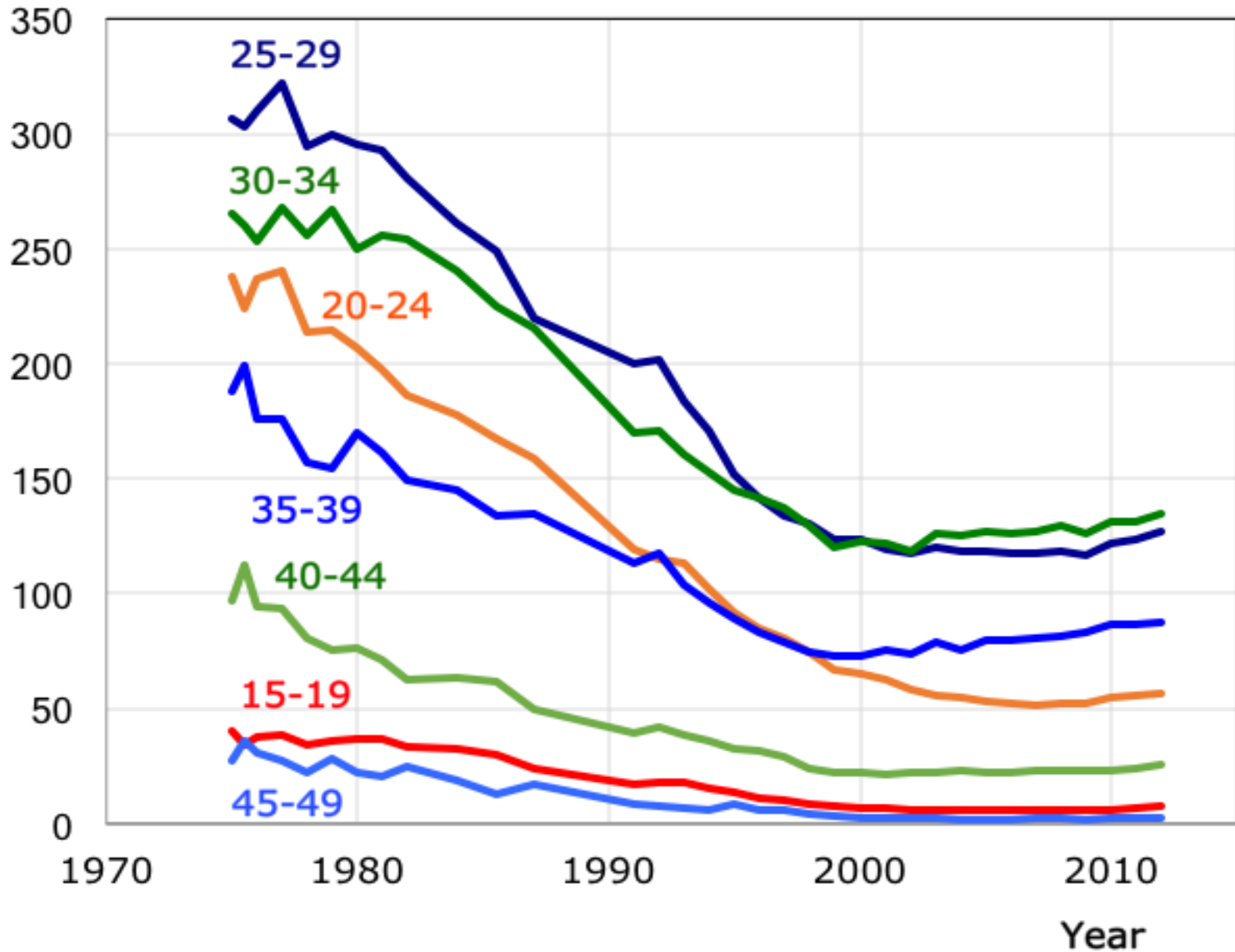


Fertility rate (per 1000)



Age specific fertility rates

Fertility rate (per 1000)



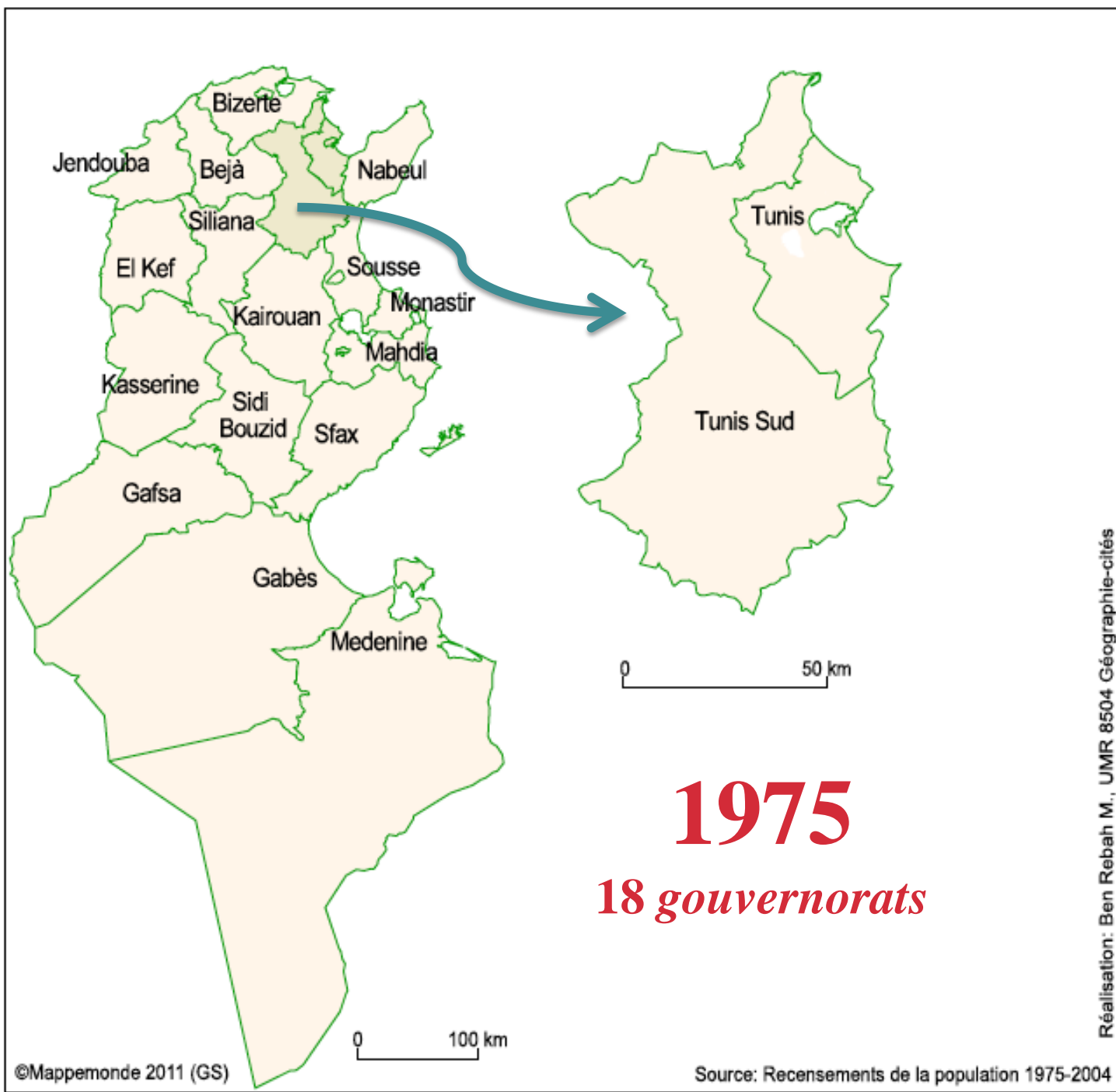
Questions

- Are national fertility level and trends also observed everywhere in Tunisia? Or are they resulting from geographical compensations?
- Has the geographical distribution of fertility changed over time?
- Is there any relation between geographical variation of fertility and that of nuptiality

1. Data and method

What kind of regional data are available?

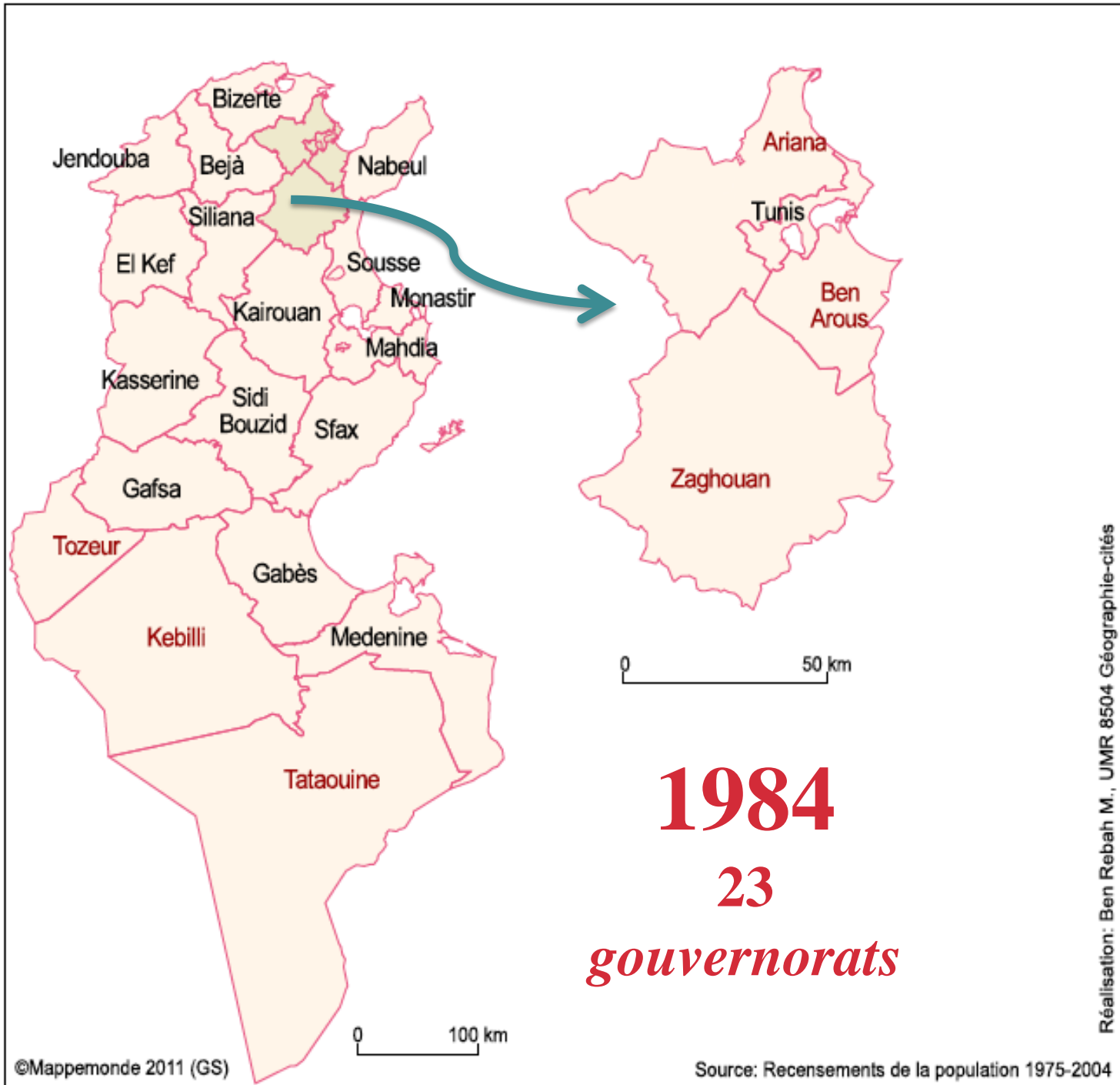
- Statistics from censuses and civil registration system
 - Good birth and marriage statistics from the civil registration system
 - Population censuses: 1966, 1975, 1984, 1994, 2004 and 2014
- Limits
 - Births and marriages registered not available for certain years
 - The proportion of births for which age of mother is unknown is high in some regions
 - Mother's residence can be a problem in some region (Tunis and its suburbs)
 - Changes in administrative limits between the censuses



Five

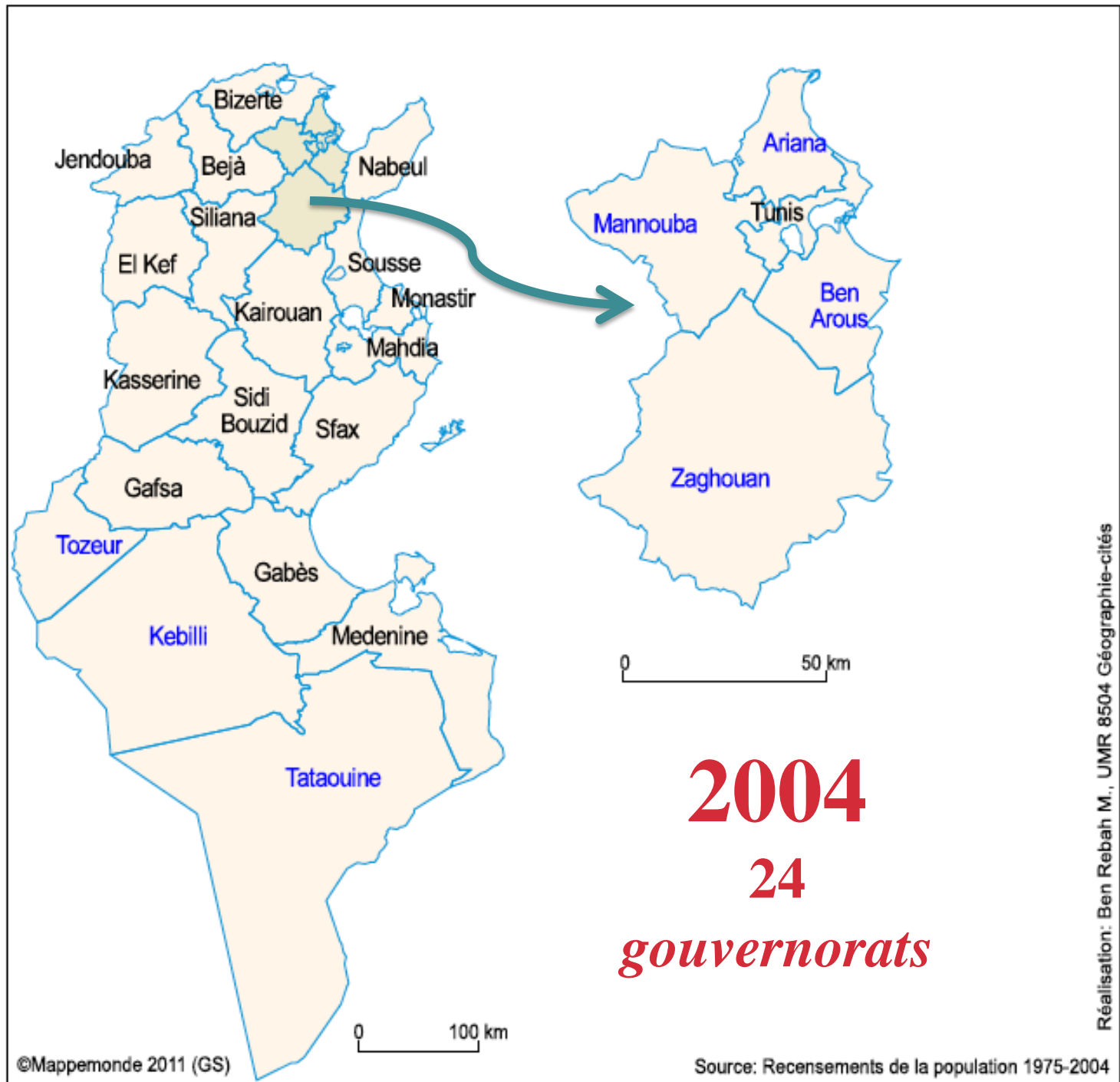
Gouvernorats:
are split into
two new ones

- Tunis-Sud:
Ariana, and
Zaghouan
- Tunis:
Tunis and
Ben-Arous
- Gafsa:
Gafsa and
Tozeur
- Gabes:
Gabes and
Kebili
- Medenine:
Medenine and
Tataouine



1984
23
gouvernorats

Creation of
the
Gouvernorat
of Manouba
from a part of
Ariana and
transfert of a
part of Tunis
to Ariana



2004
24
gouvernorats

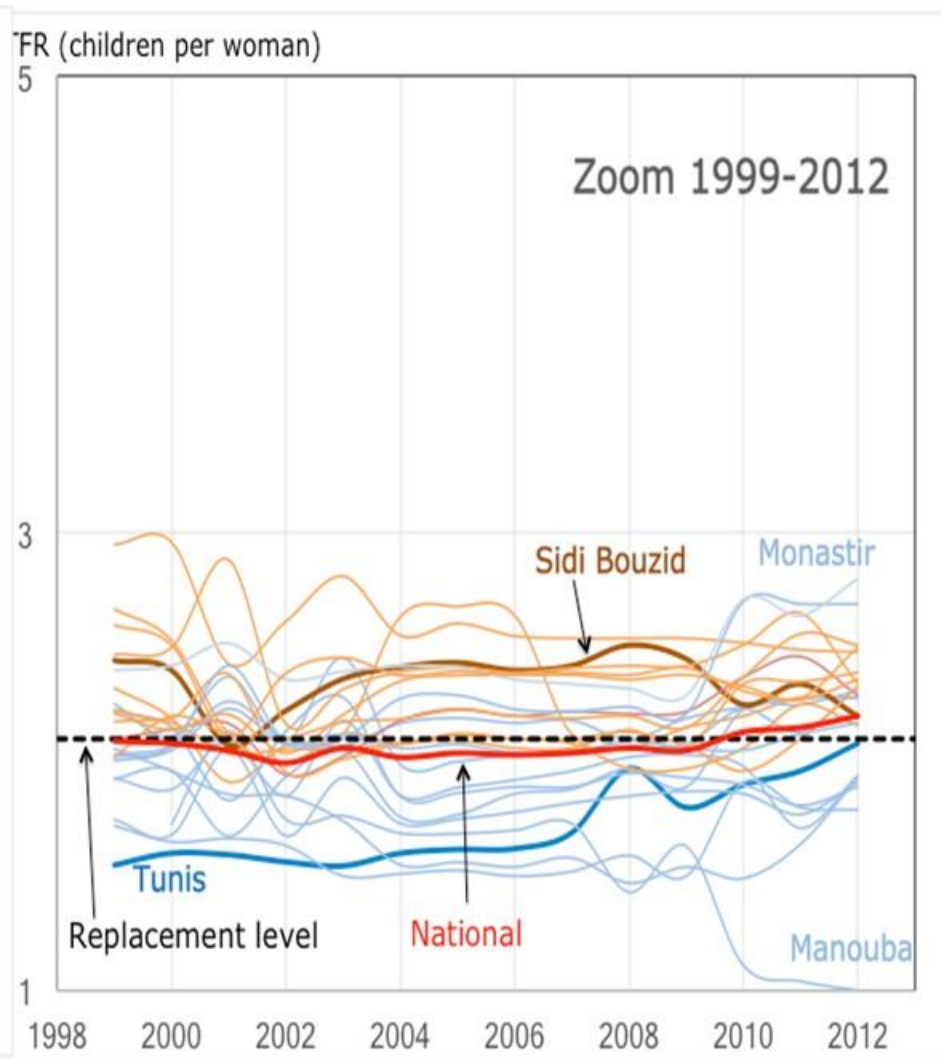
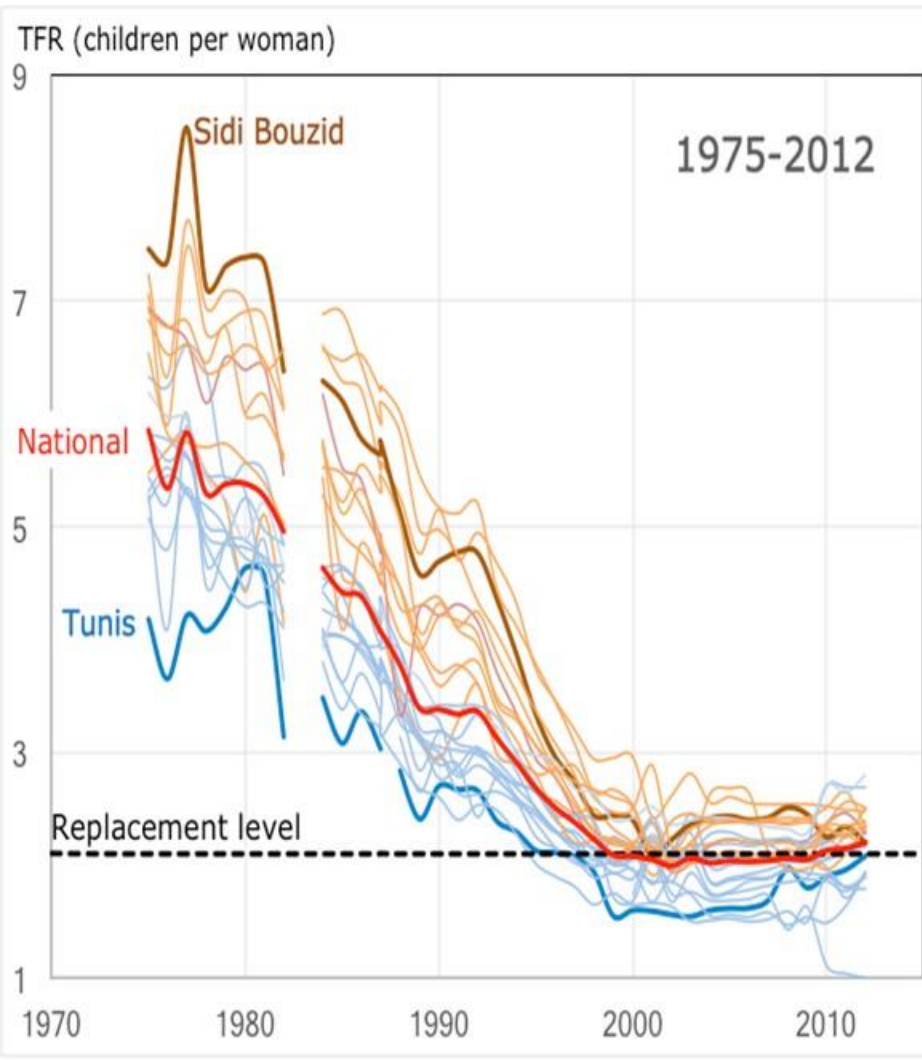
Which indicators to be used at the regional level?

- About fertility
 - Total Fertility Rate (TFR)
 - based on age specific fertility rates

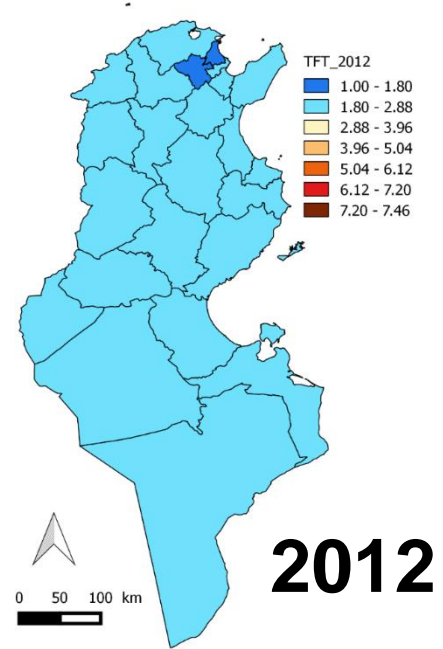
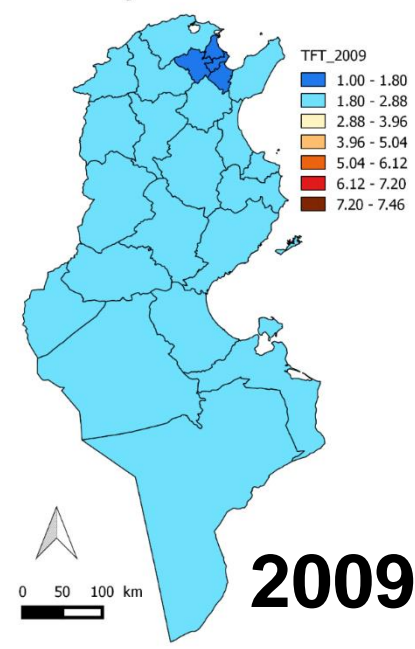
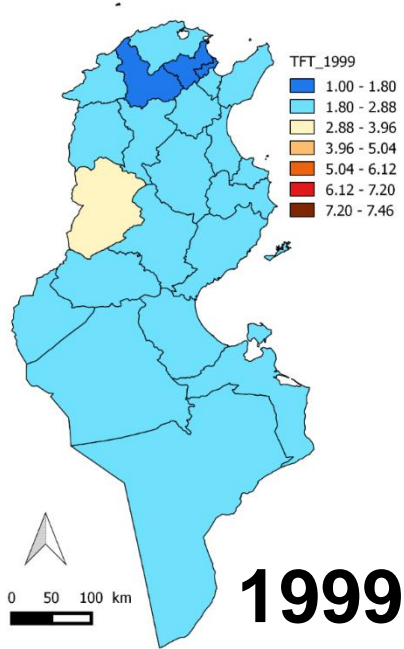
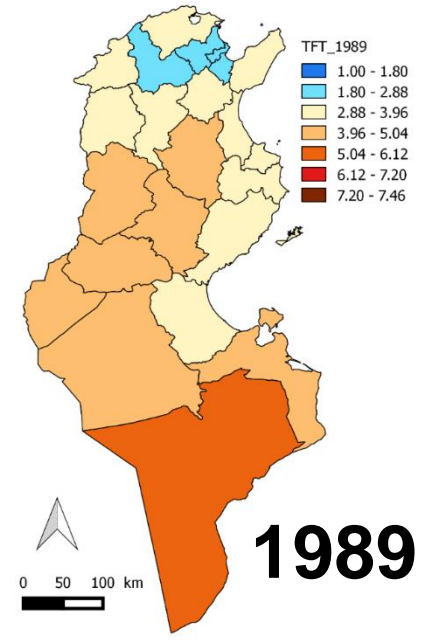
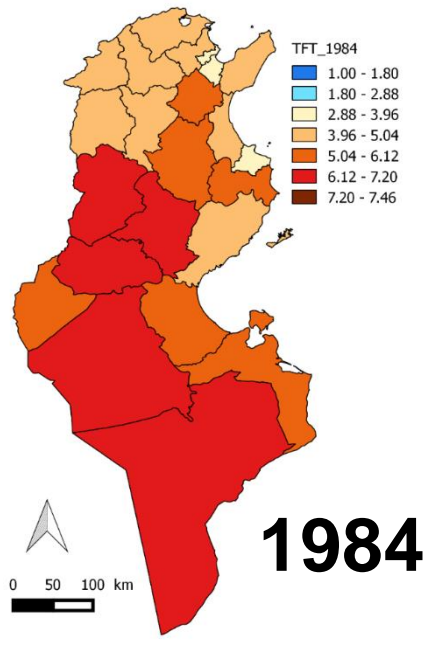
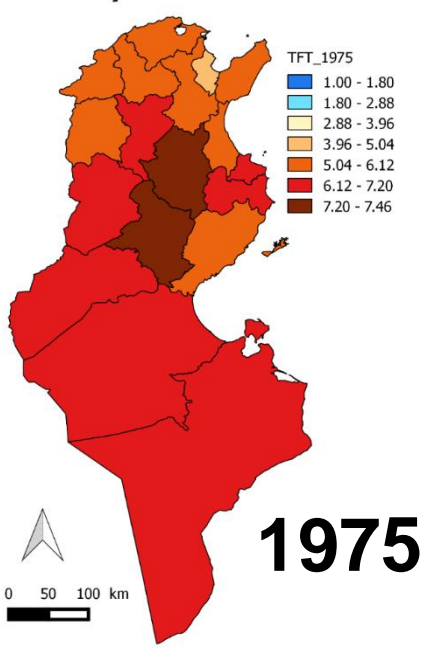
- About Nuptiality
 - Mean Age at First Marriage (MAFM)
 - based on proportions of never married (Hajnal method)
 - based on vital statistics

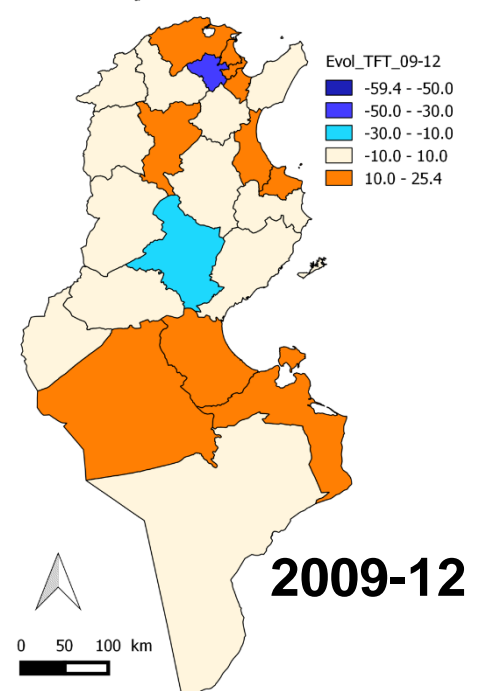
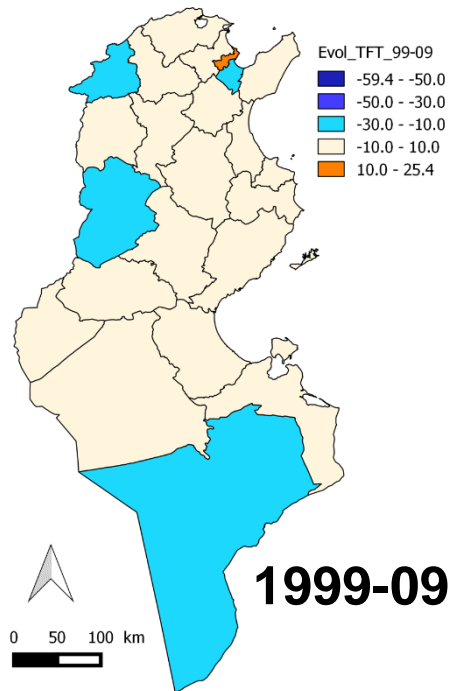
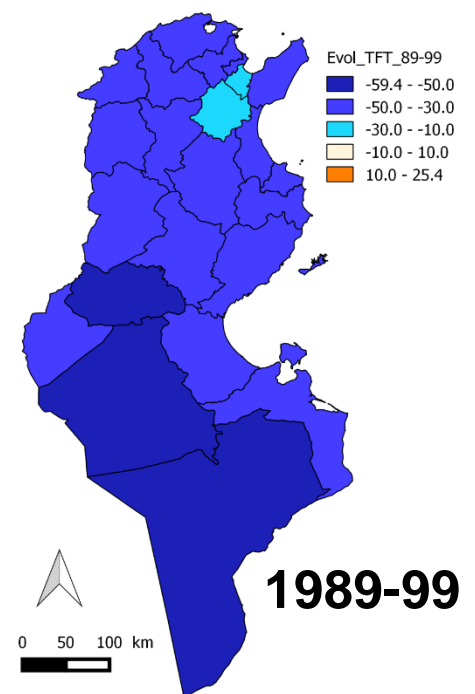
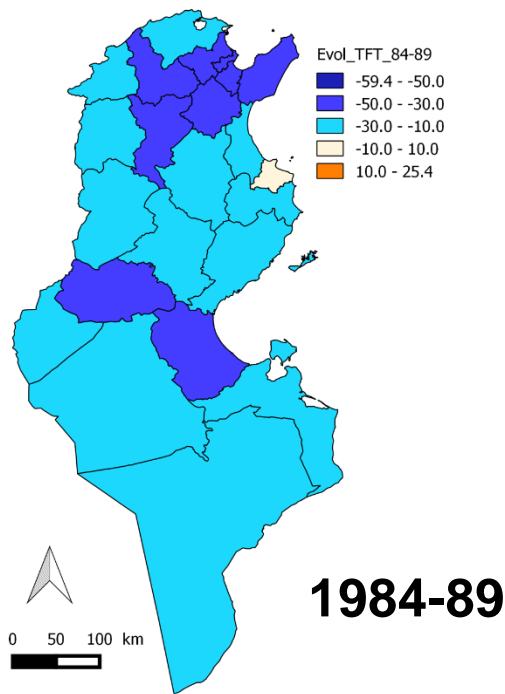
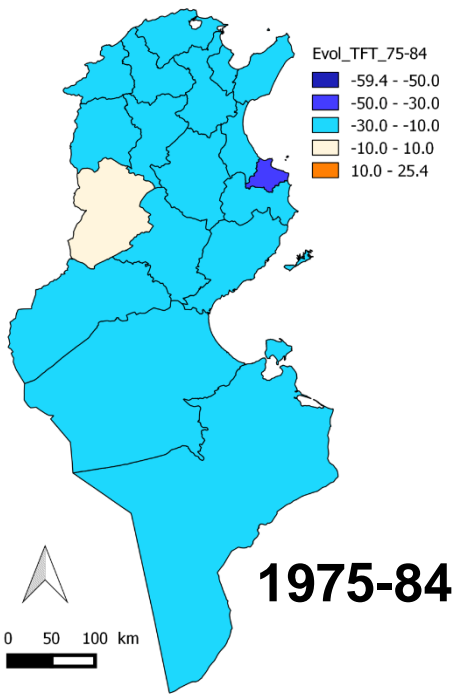
2. Trends in geographical variation of fertility

Trends in TFR at the *gouvernorat* level



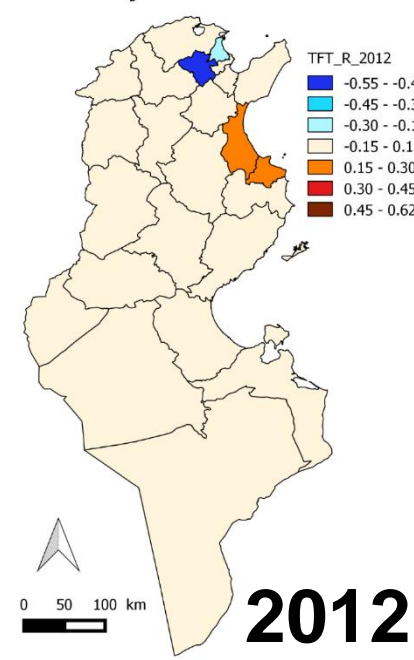
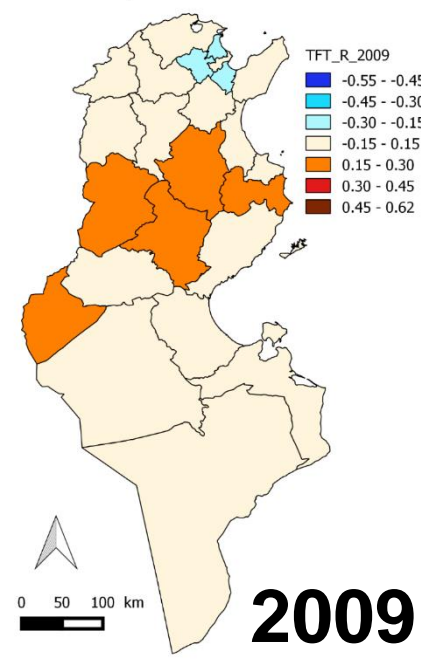
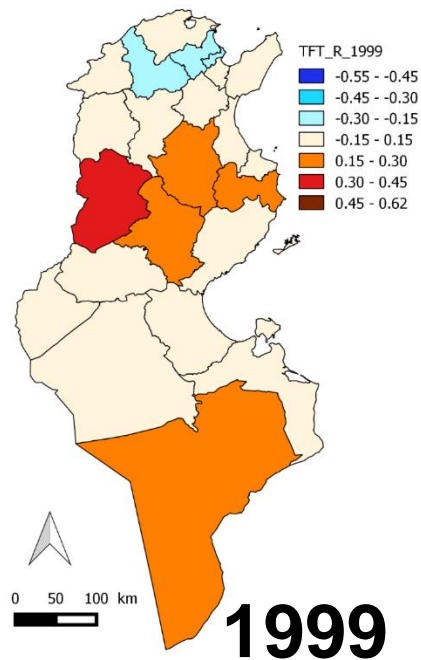
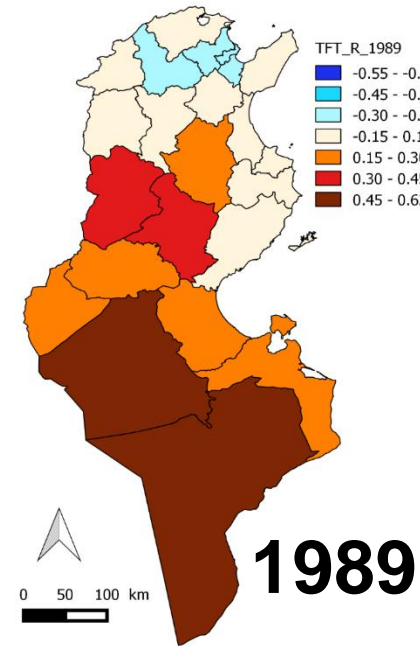
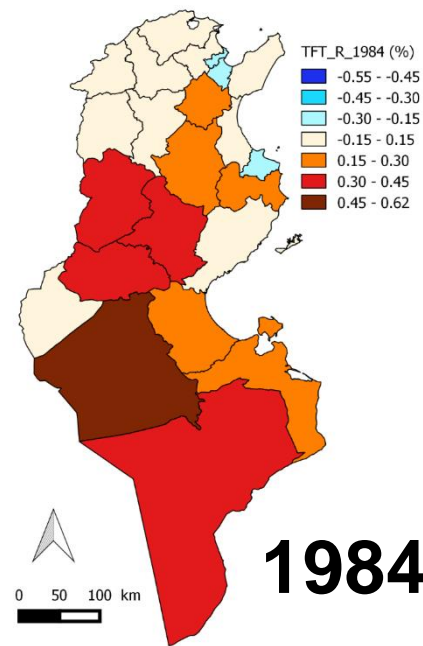
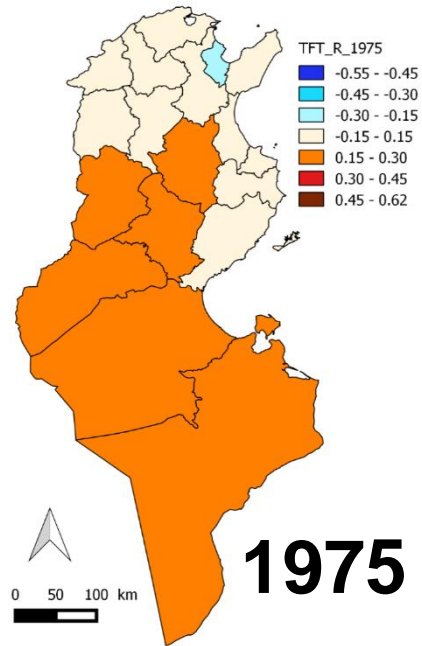
TFR by *gouvernorat* from 1975 to 2012





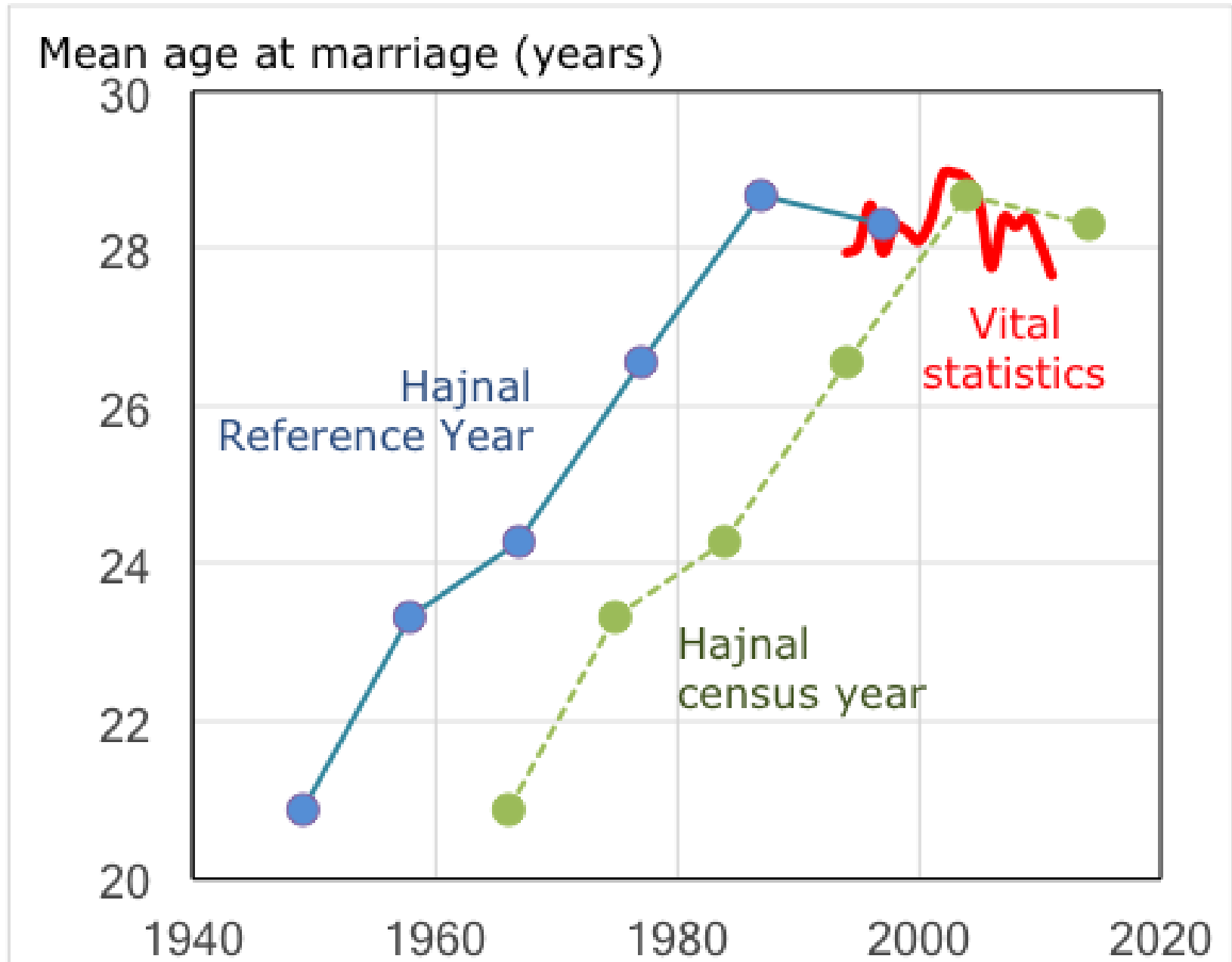
TFR changes (%)
by *gouvernorat*
from 1975 to
2012

Relative
TFR by
gouvernorat
from 1975
to 2012



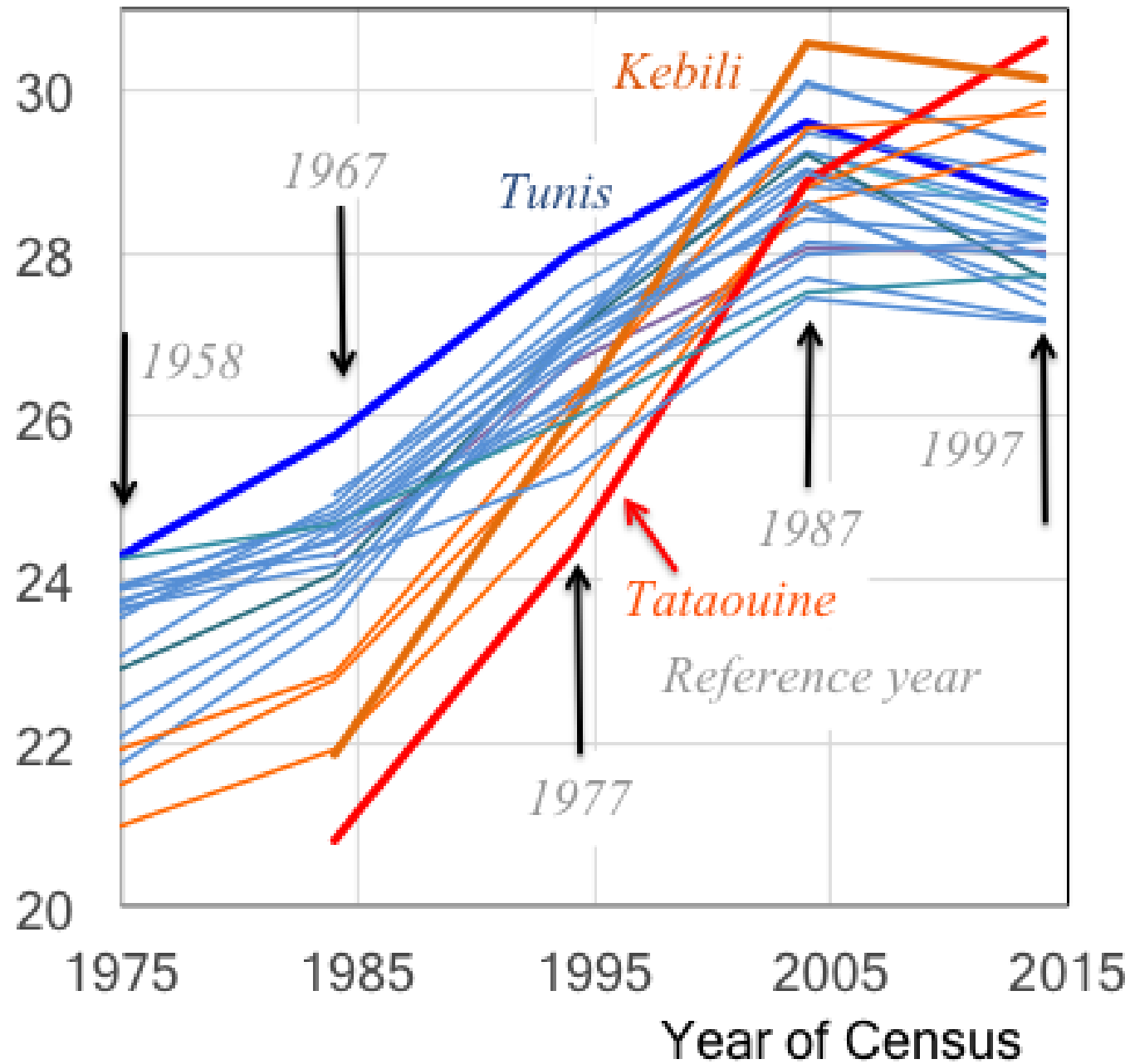
3. Trends in geographical variation of nuptiality

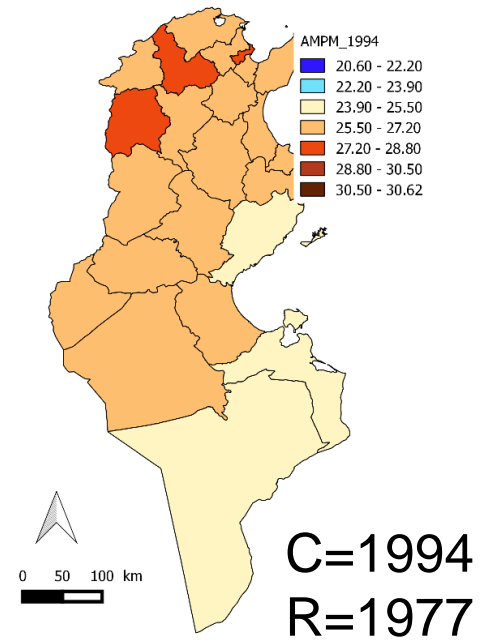
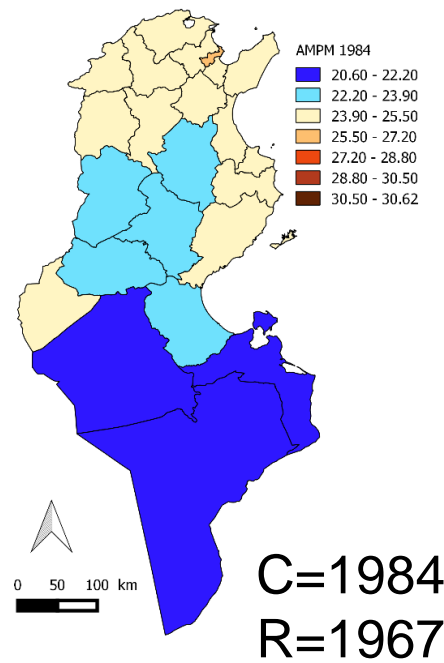
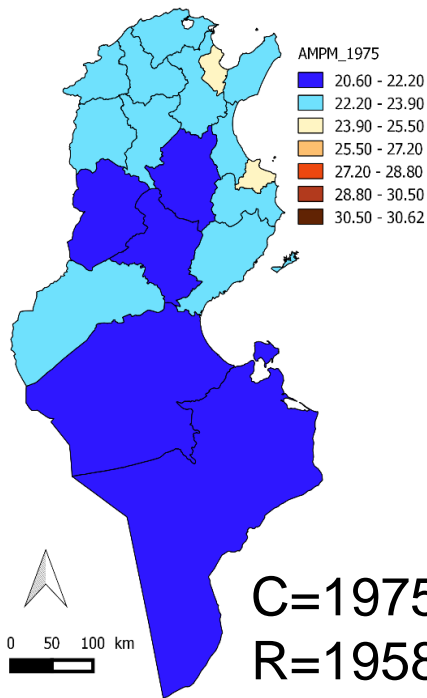
Female Mean Age at First Marriage, all Tunisia



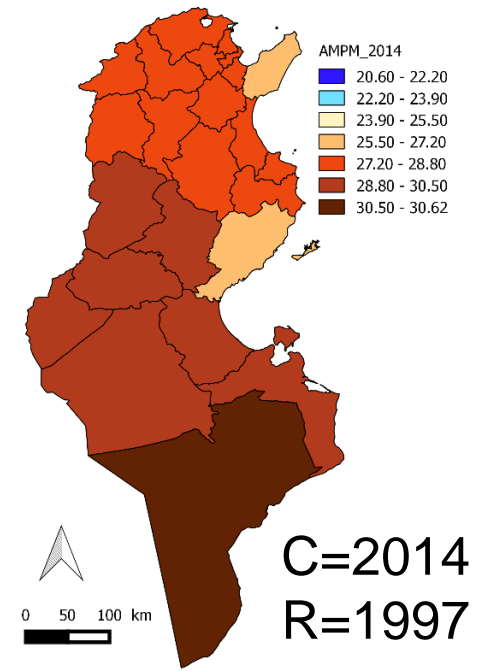
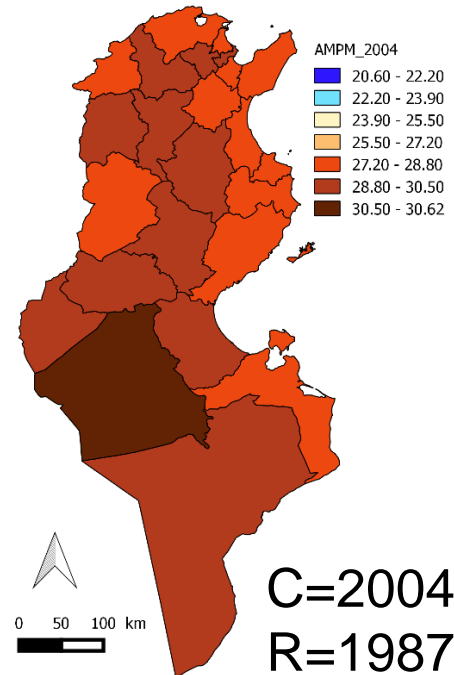
Trends in female Mean Age at First Marriage, by *Gouvernorat*

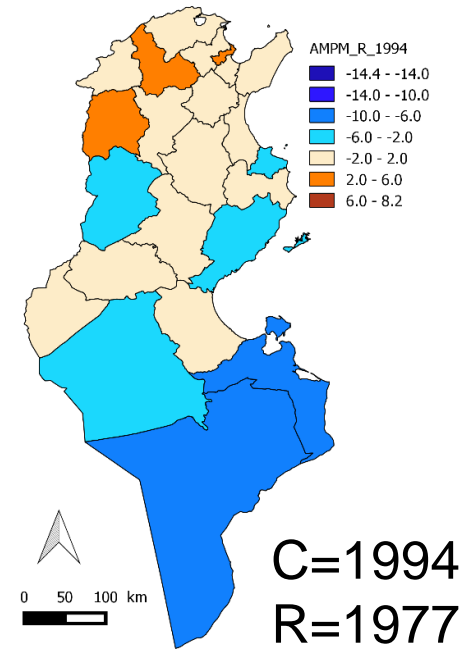
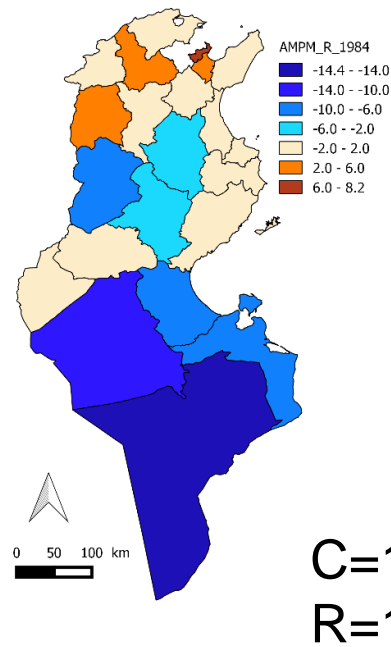
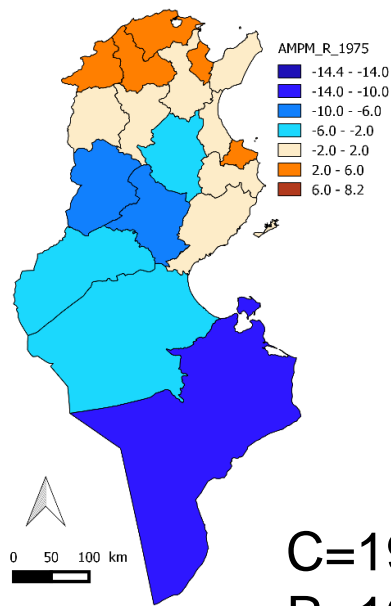
MAFM (Hajnal)



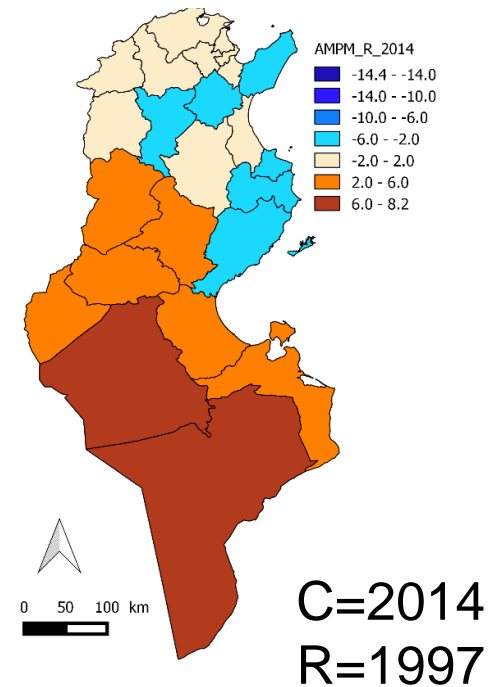
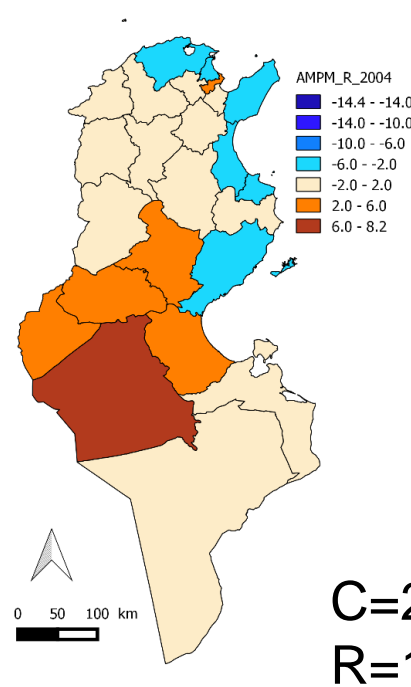


Hajnal MAFM
observed at
censuses (C)
since 1975
and reference
year (R) by
gouvernorat





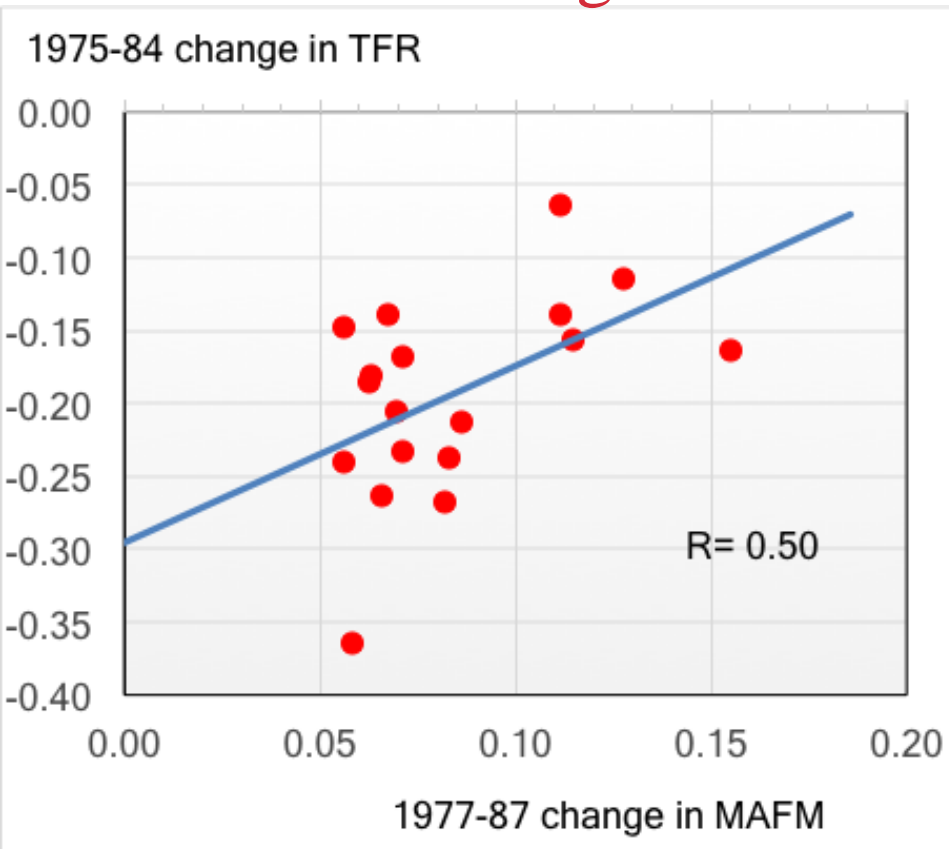
Relative
Hajnal MAFM
observed at
censuses (C)
since 1975
and reference
year (R) by
gouvernorat



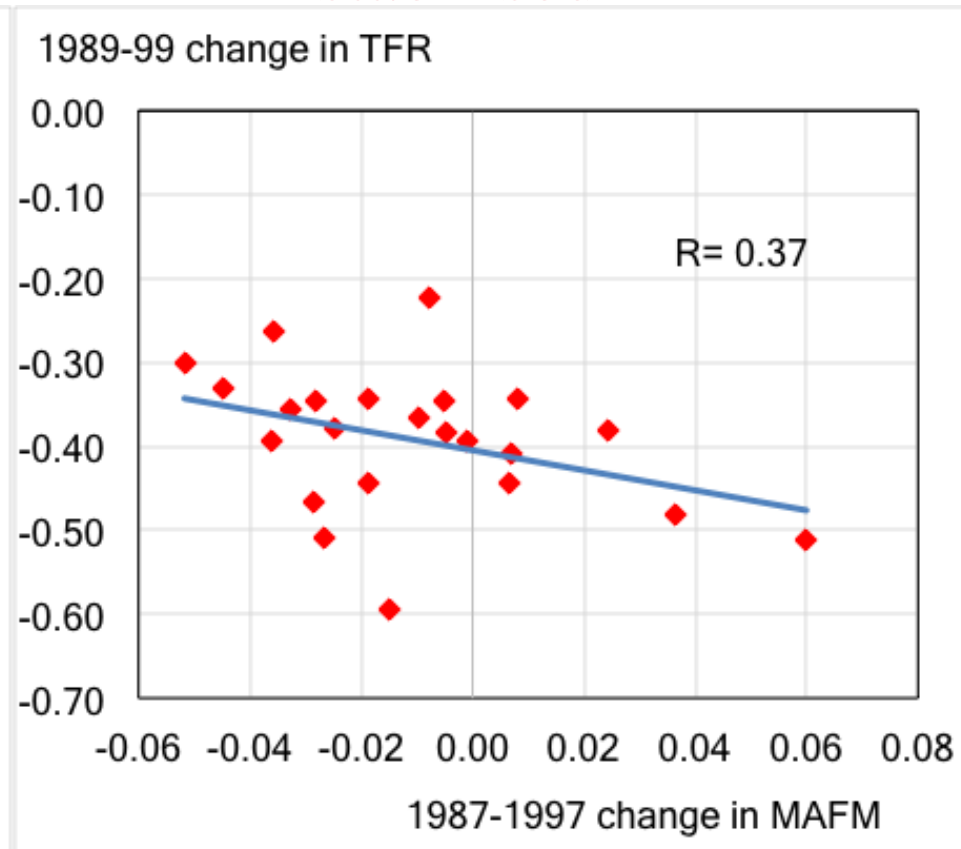
4. Link between change in MAFM and change in TFR by *Gouvernorat*

During a period of fertility decline

When age at marriage was increasing



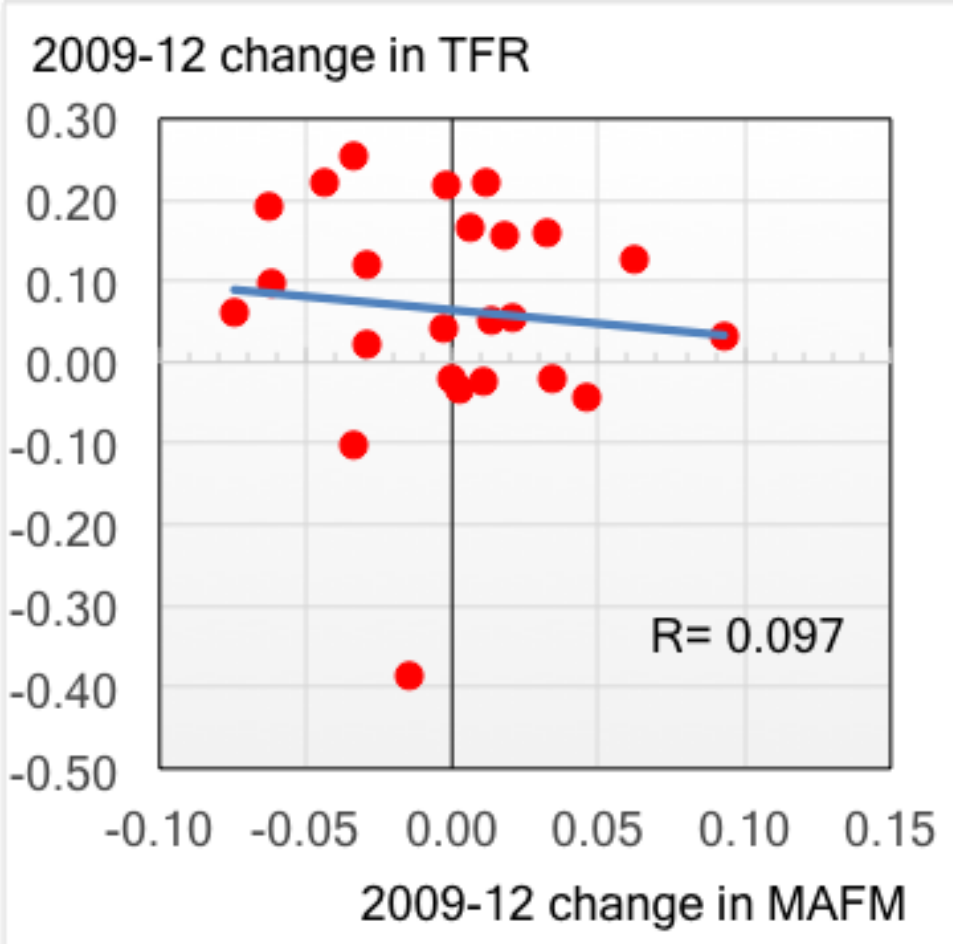
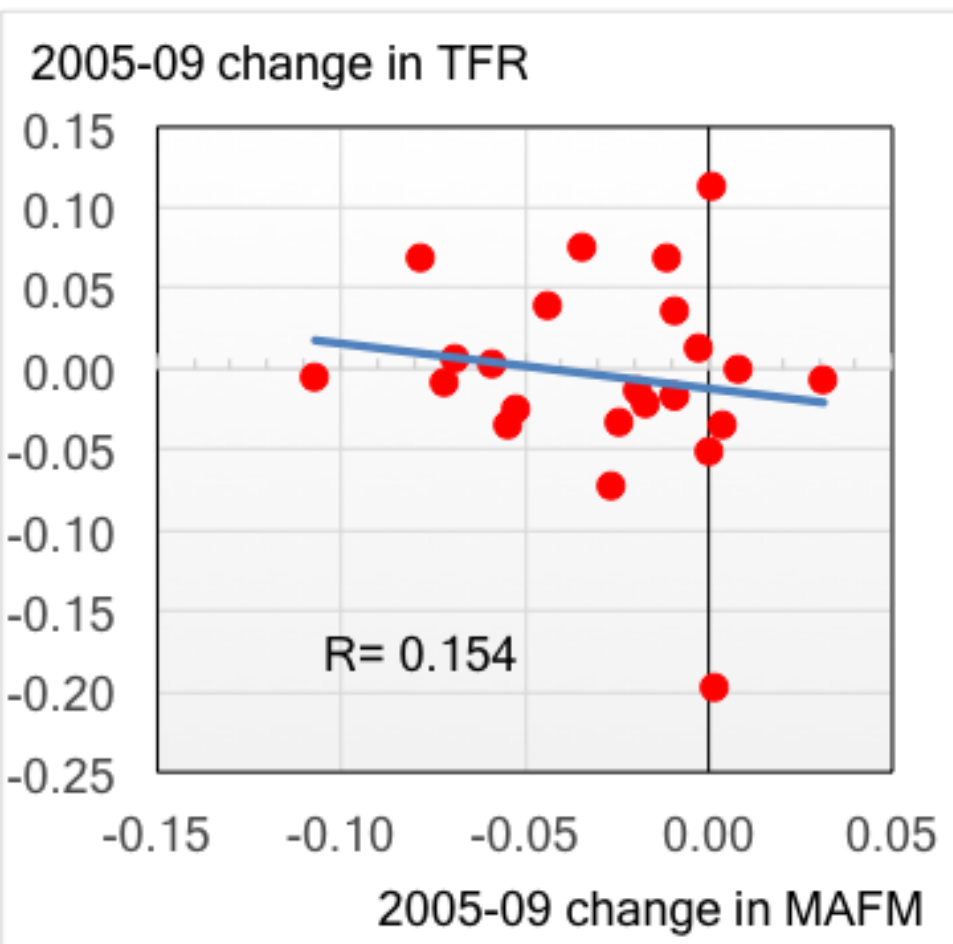
When age at marriage stabilised



When fertility ceased declining

When fertility stabilises

When fertility increases



Thank you